



Project reporting in Jira: how to build savvy reports with easyBI

Ilze Leite-Apine
easyBI Customer Support



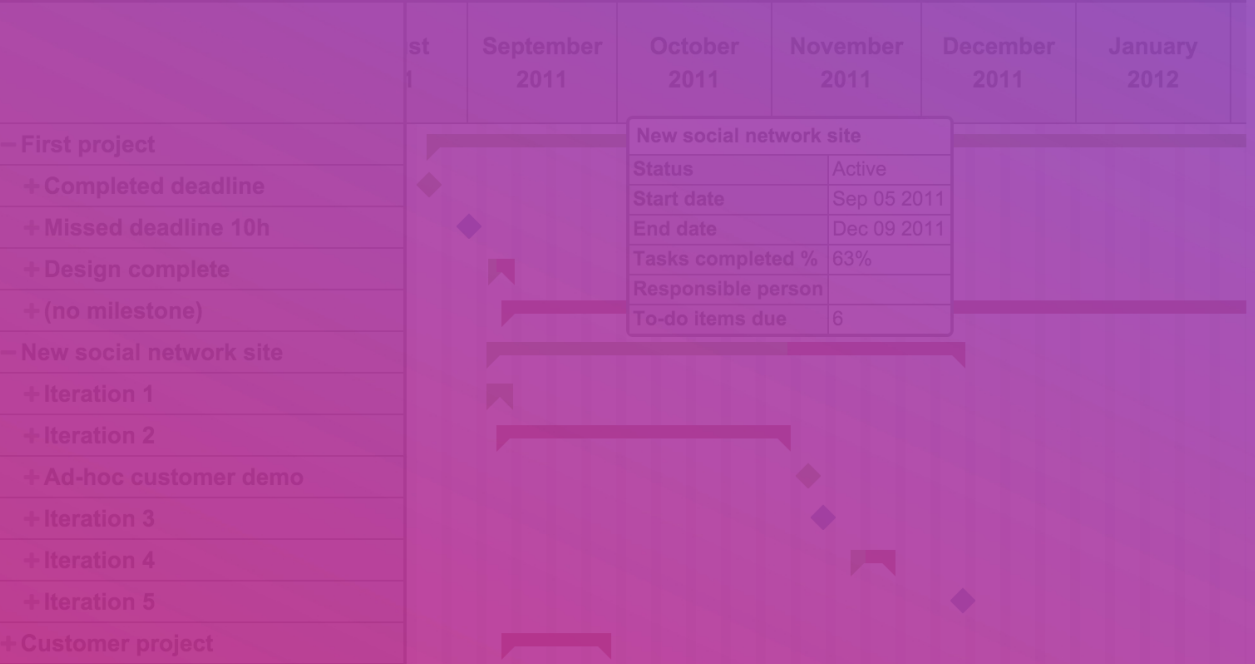
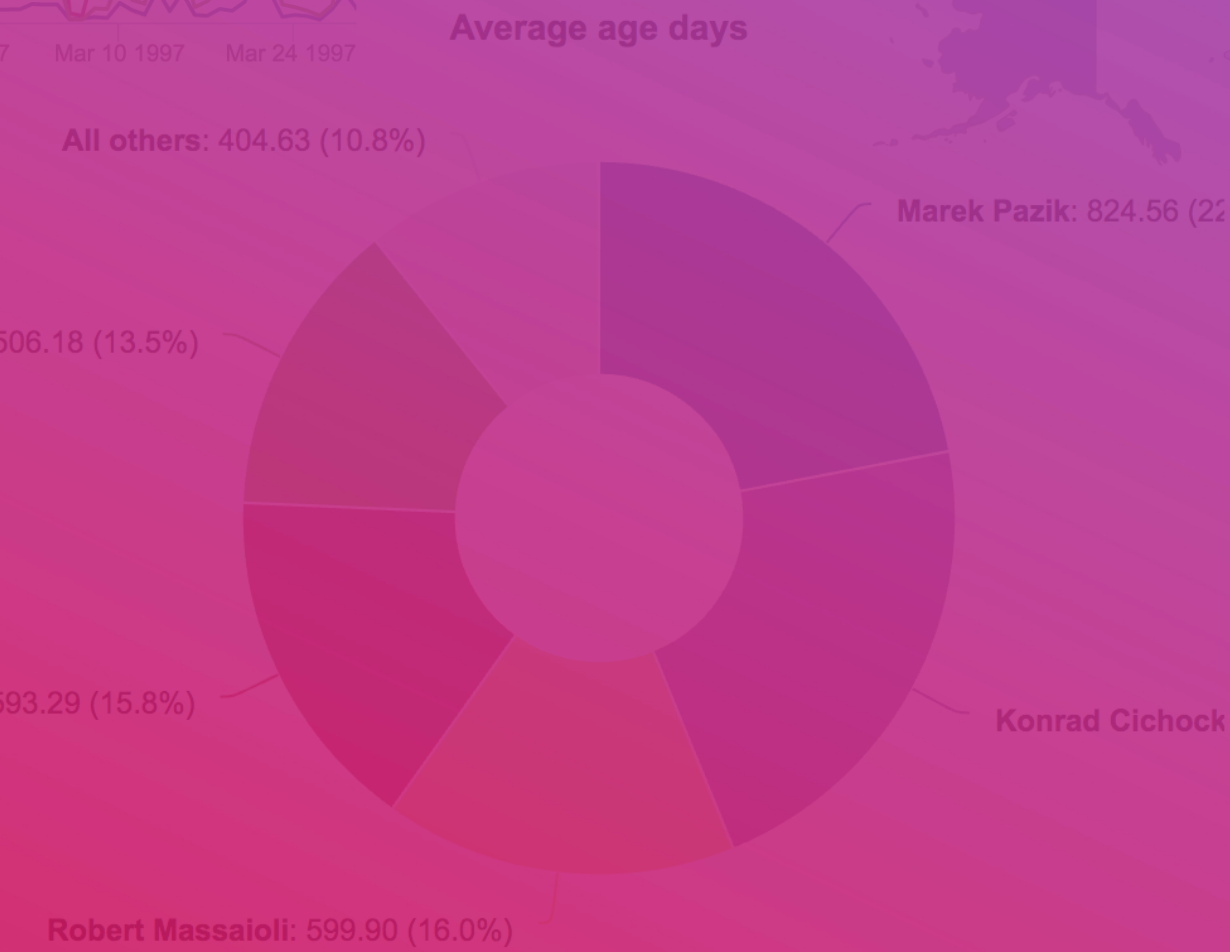
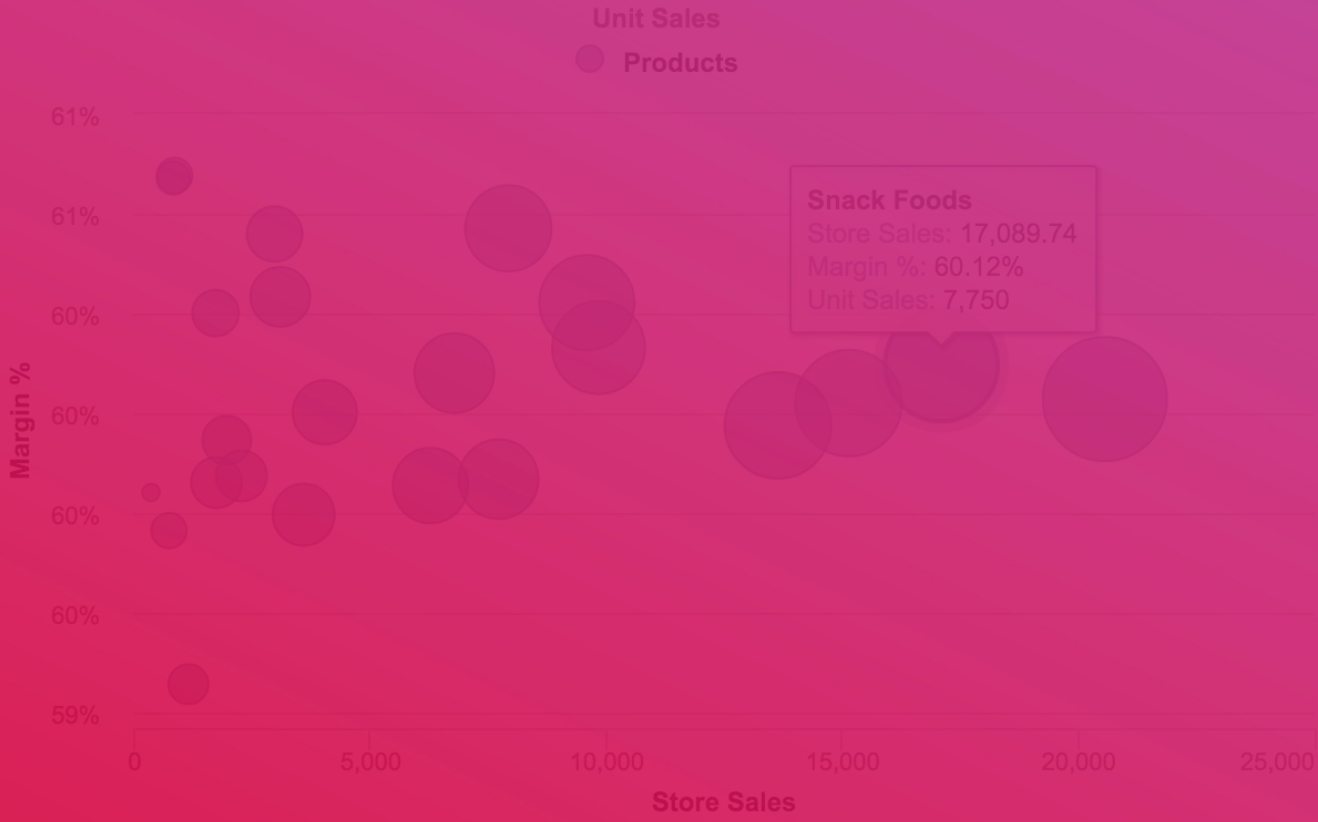
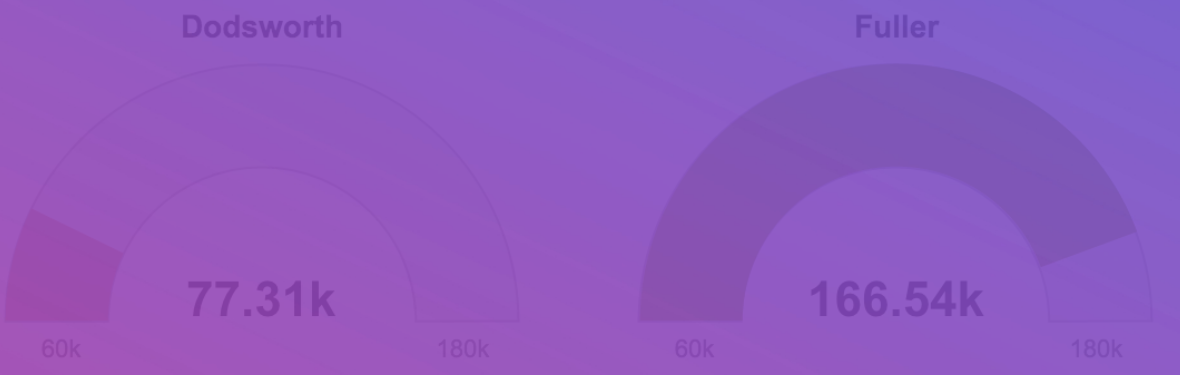
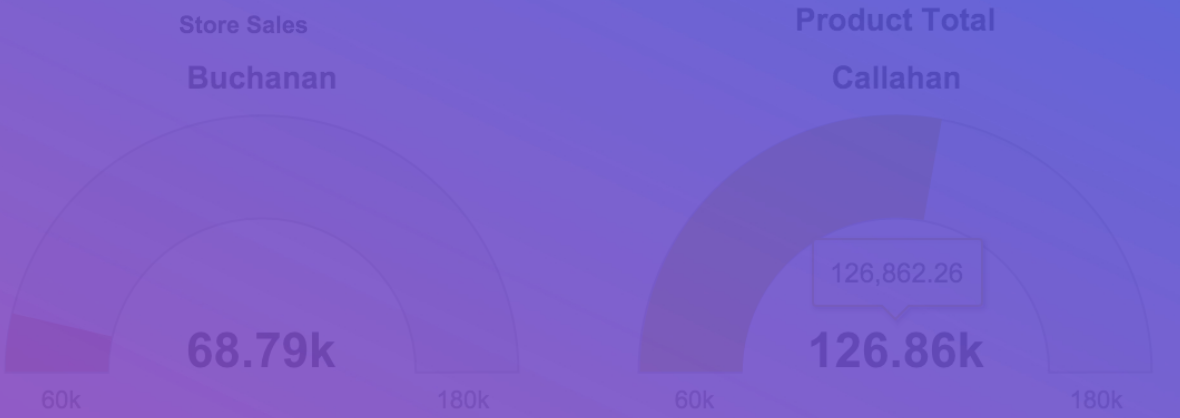
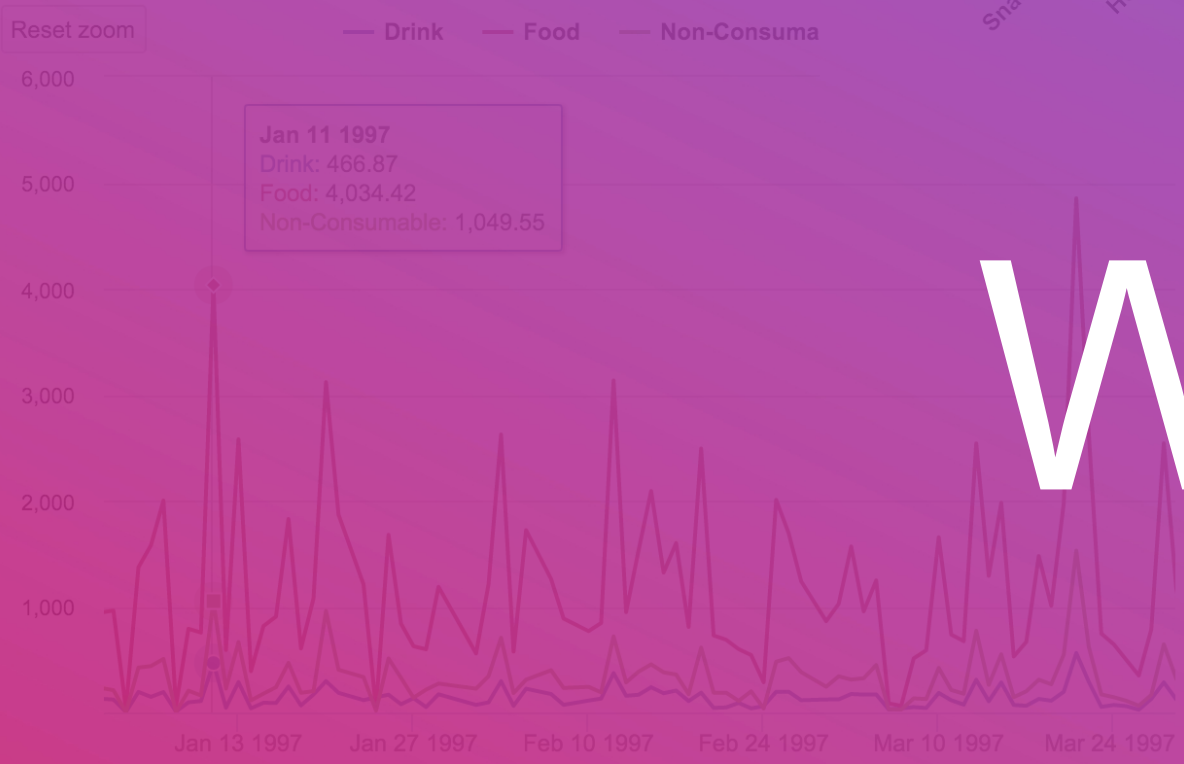
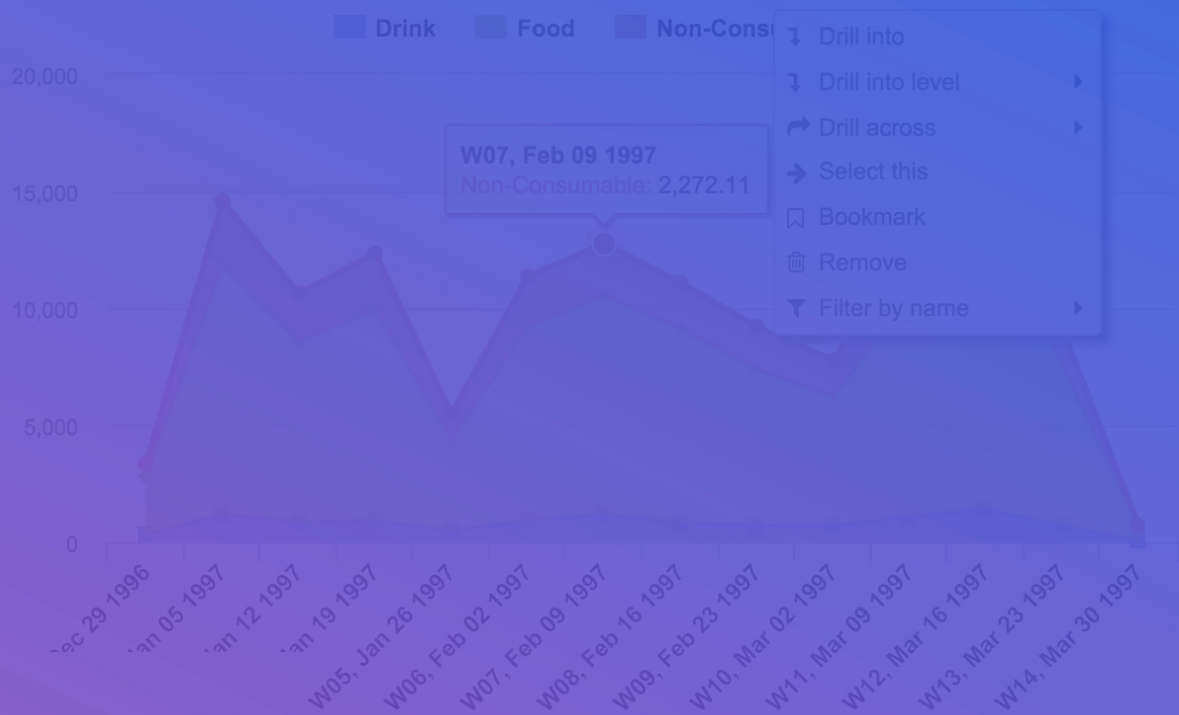
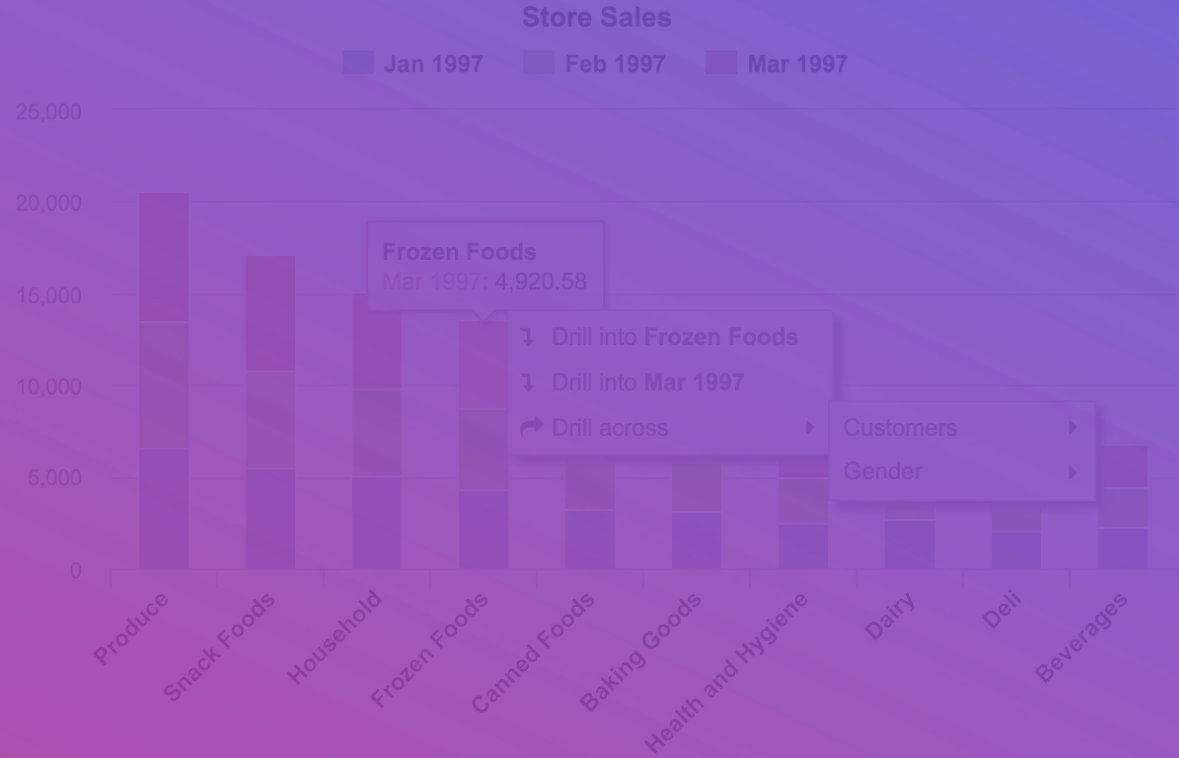
Why easyBI?

Visualise and
explore

Cloud, Server, DC

Why eazyBI?

	Store Sales	Store Cost	Unit	Average
⊖ All Customers	139,628.35	55,752.240	↗ Drill across	
⊖ USA	139,628.35	55,752.240	➔ Select this	
⊕ CA	36,175.20	14,431.085	⊞ Remove	
⊖ OR	40,170.29	16,081.073	⚙ Order by	
⊕ Albany	4,491.26	1,782.817	⬆ Top rows	
⊕ Beaverton	2,407.97	950.359	⬆ Bottom rows	
⊕ Corvallis	5,695.13	2,281.248	⬇ Filter rows	
⊕ Lake Oswego	2,262.56	907.6483	⚙ Cell formatting	
⊕ Lebanon	5,934.62	2,390.0872		1,102 6.41
⊕ Milwaukie	2,892.32	1,155.6925		2,826 6.49
⊕ Oregon City	2,324.62	929.6752		1,345 6.92
⊕ Portland	2,122.12	847.5187		1,113 6.55
⊕ Salem	4,251.81	1,697.9039		1,001 6.65
⊕ W. Linn	2,161.61	871.0418		2,104 6.28
				1,041 6.59





easyBI is
a business intelligence tool
for data analysis and visualisation
with built-in Jira and Confluence
integration

Analyze Atlassian and Marketplace apps

◆ Jira Software ⚡ Jira Service Management

✕ Confluence ▣ Bitbucket ↻ Bamboo

🌀 Zephyr Scale

🌀 SMARTBEAR
Zephyr

📊 insight

😊 Jira Misc Custom Fields

✓ Tempo

⚡ XRAY

🌐 ELEMENTS
CONNECT

📦 PROFIELDS
DEISER

➡ Advanced Roadmaps
(formerly Portfolio)

👟 Adaptavist ScriptRunner
for JIRA

ATLASSIAN Marketplace



Cloud



Server

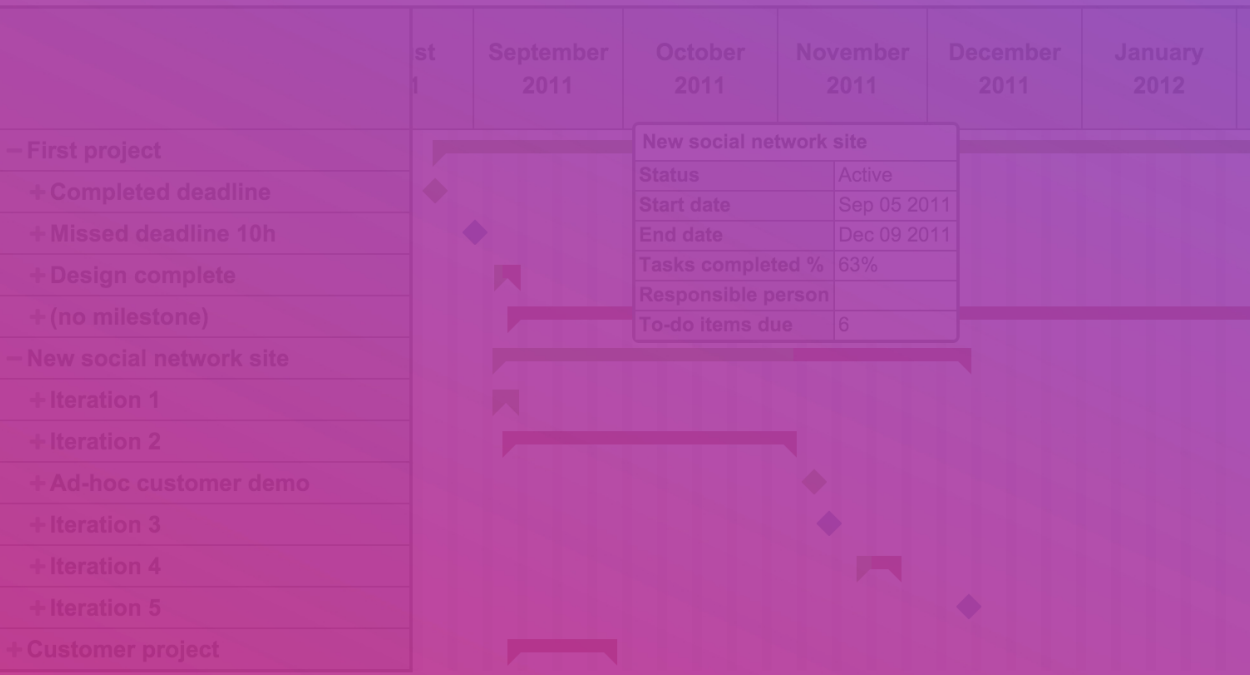
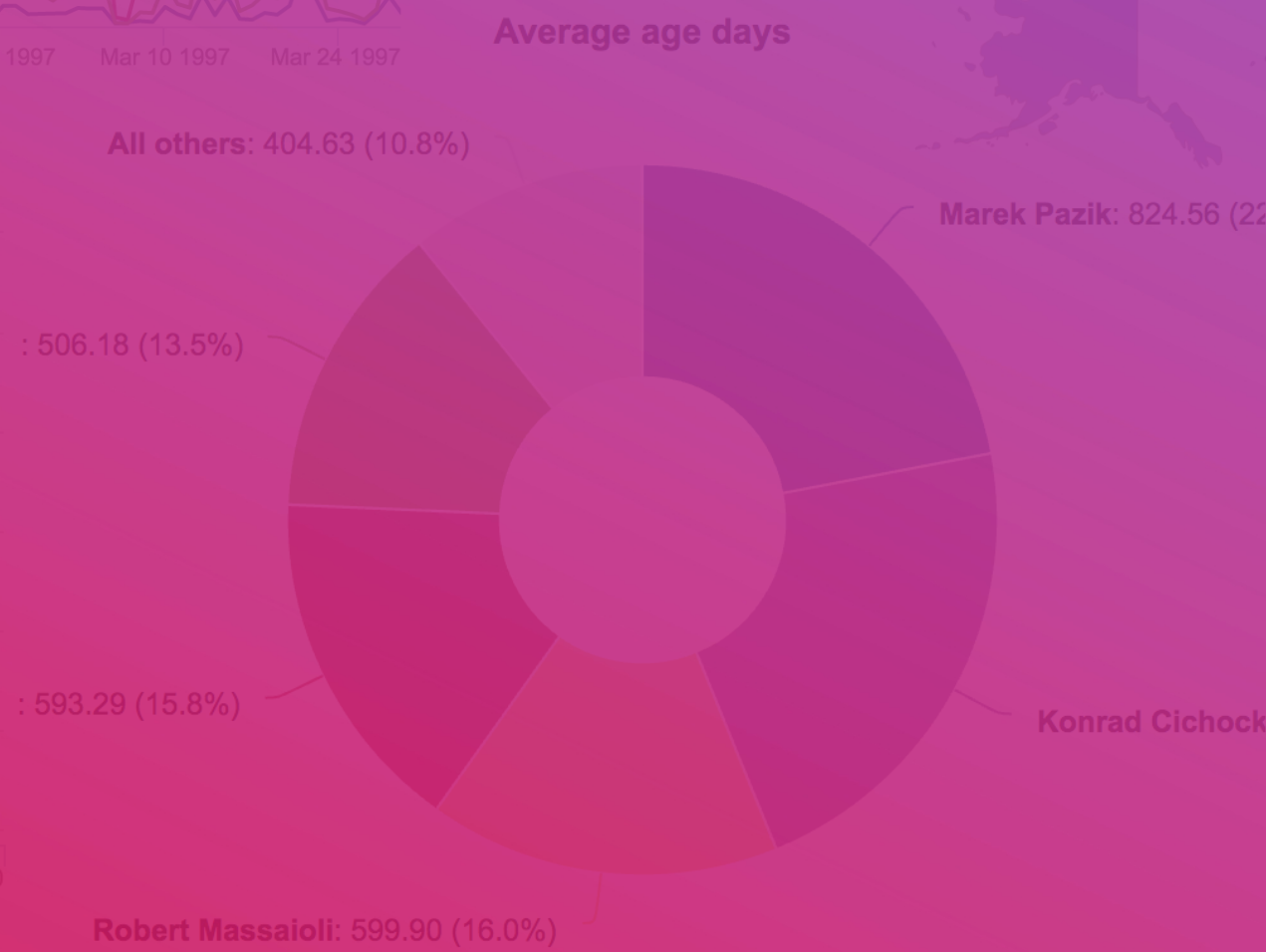
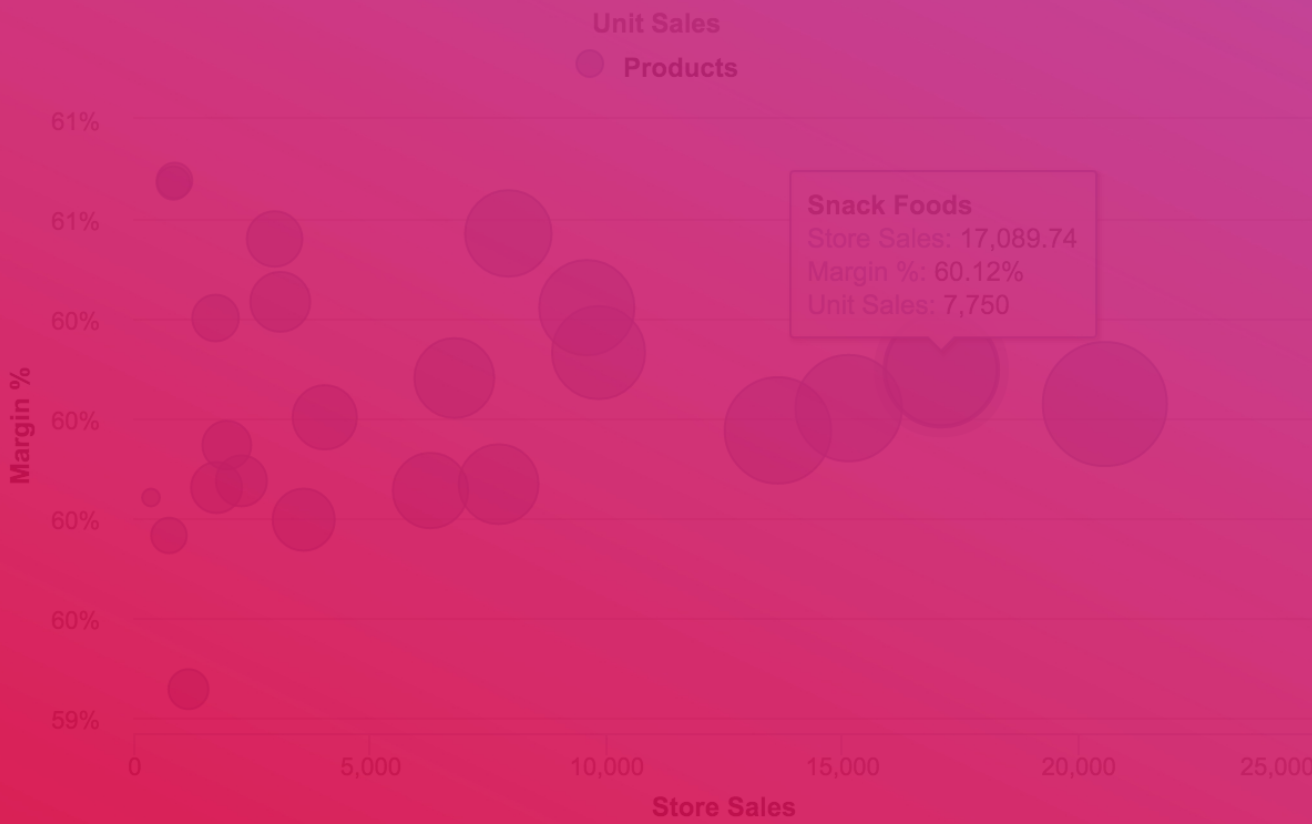
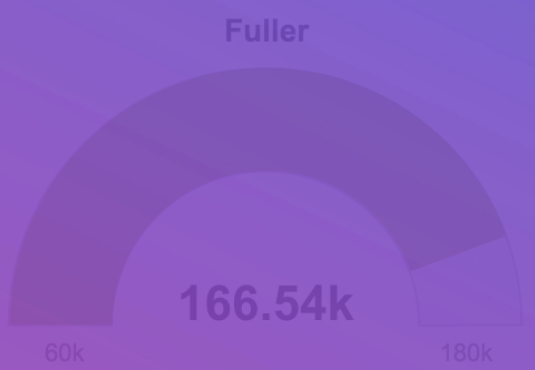
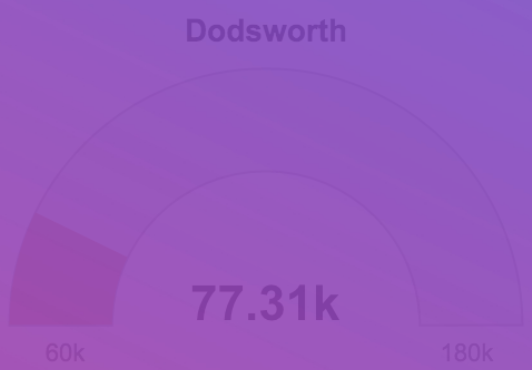
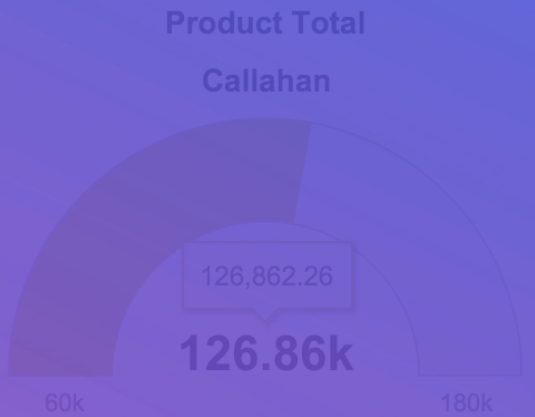
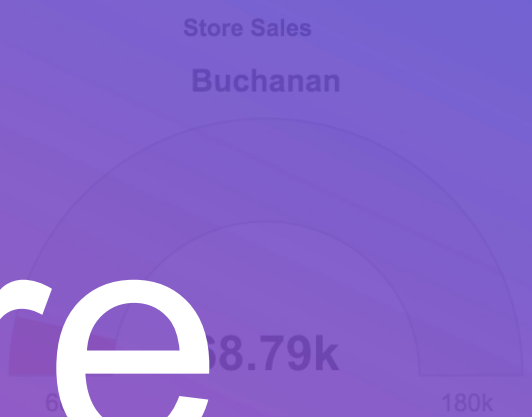
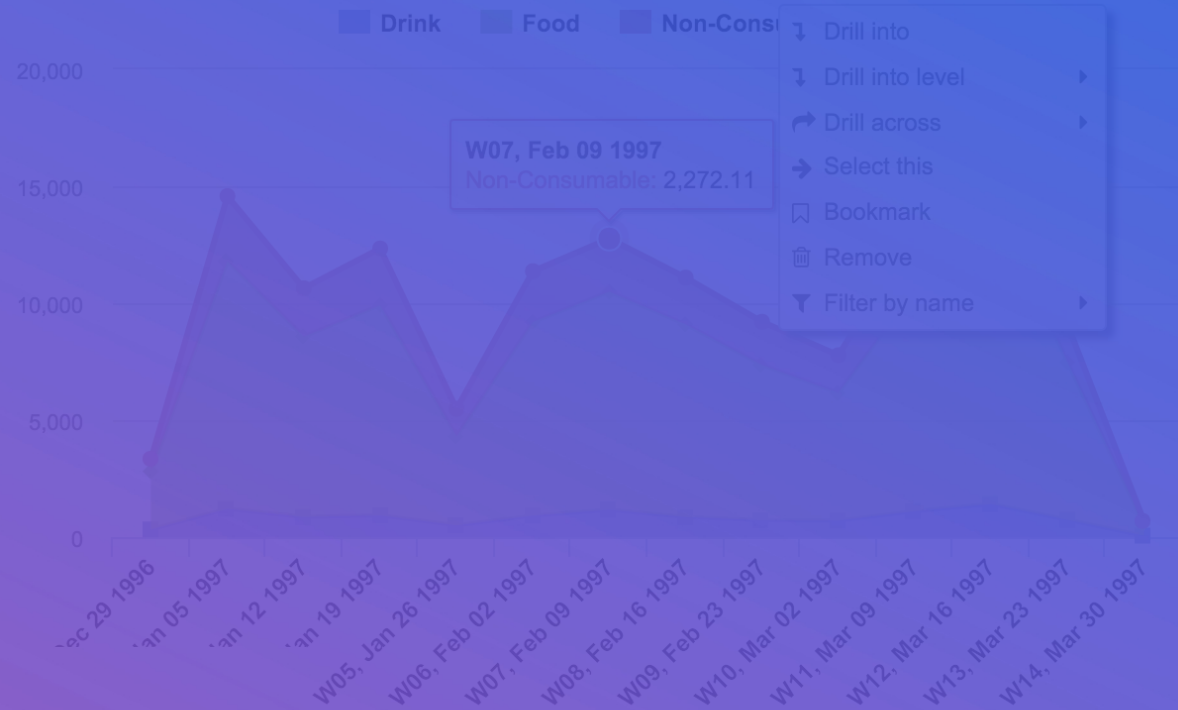
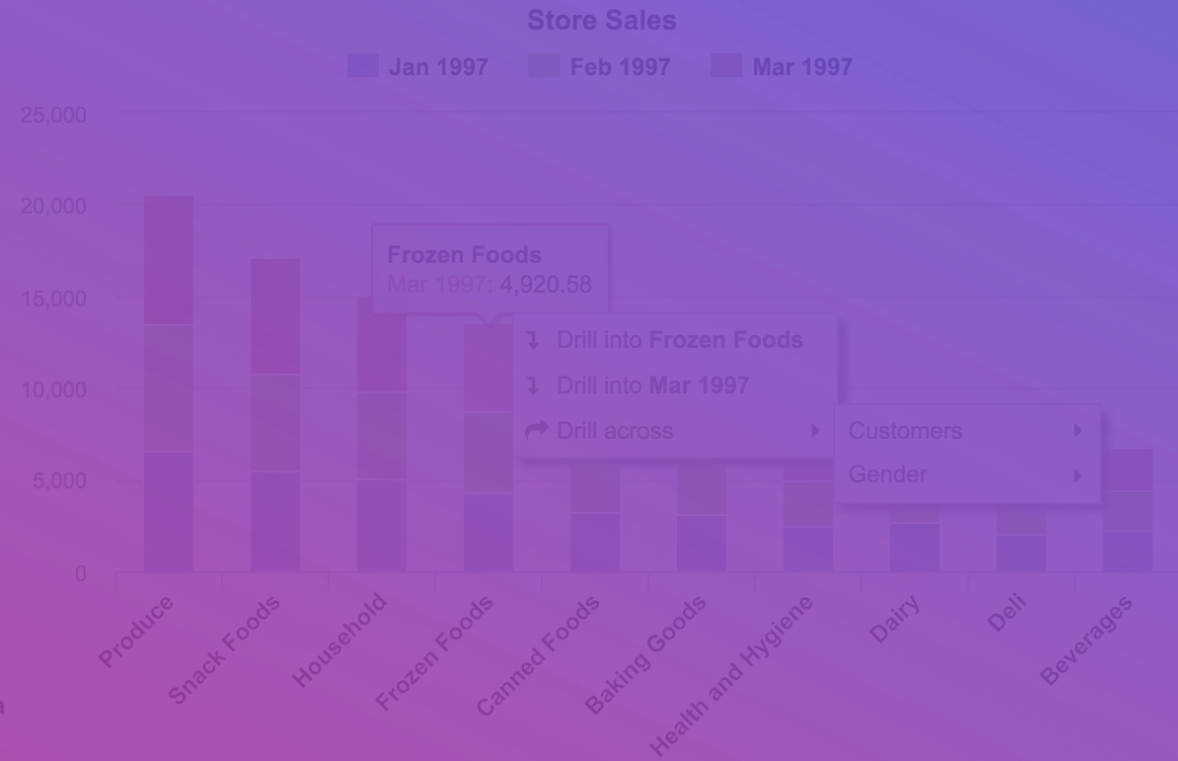


Data Center

Visualise and explore

	Store Sales	Store Cost	Unit	Average
→ All Customers	139,628.35	55,752.240	↗ Drill across	
→ USA	139,628.35	55,752.240	→ Select this	
→ CA	36,175.20	14,431.085	→ Remove	
→ OR	40,170.29	16,081.073	→ Order by	
→ Albany	4,491.26	1,782.817	→ Top rows	
→ Beaverton	2,407.97	950.359	→ Bottom rows	
→ Corvallis	5,695.13	2,281.248	→ Filter rows	
→ Lake Oswego	2,262.56	907.6483	→ Cell formatting	
→ Lebanon	5,934.62	2,390.0872		1,102
→ Milwaukie	2,892.32	1,155.6925		2,826
→ Oregon City	2,324.62	929.6752		1,345
→ Portland	2,122.12	847.5187		6.92
→ Salem	4,251.81	1,697.9039		1,113
→ W. Linn	2,161.61	871.0418		1,001
				6.65
				2,104
				6.28
				6.59

- Gender
- Products
- Time
- Year
- Quarter
- Month
- Day
- Weekly
- Year
- Week
- Day
- Fiscal
- Year
- Quarter
- Month
- Day



Create your first report

Issues >

Save Save as New Open ...

Dimensions hide

> Project	> Reporter	> Assignee	> Issue Type	> Priority
> Status	> Resolution	> Affects Version	> Fix Version	> Security Level
> Issue	> Logged by	> Label	> Time	> Week Day
> Transition Status	> Transition	> Transition Author		

Agile show 2 dimensions Custom fields show 2 dimensions

Pages

Drag here if needed

Columns

> Measures

Rows

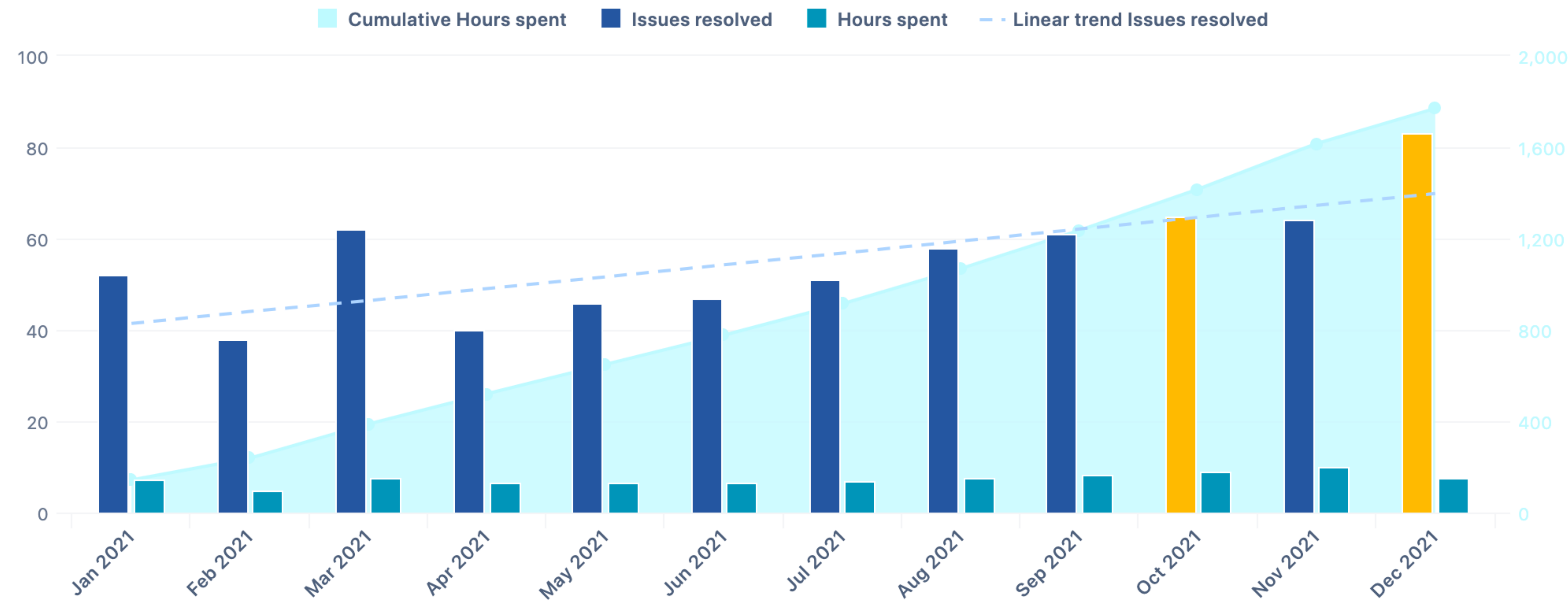
Drag dimensions here

Table Bar Line Pie Scatter Timeline Map Gantt Gauge

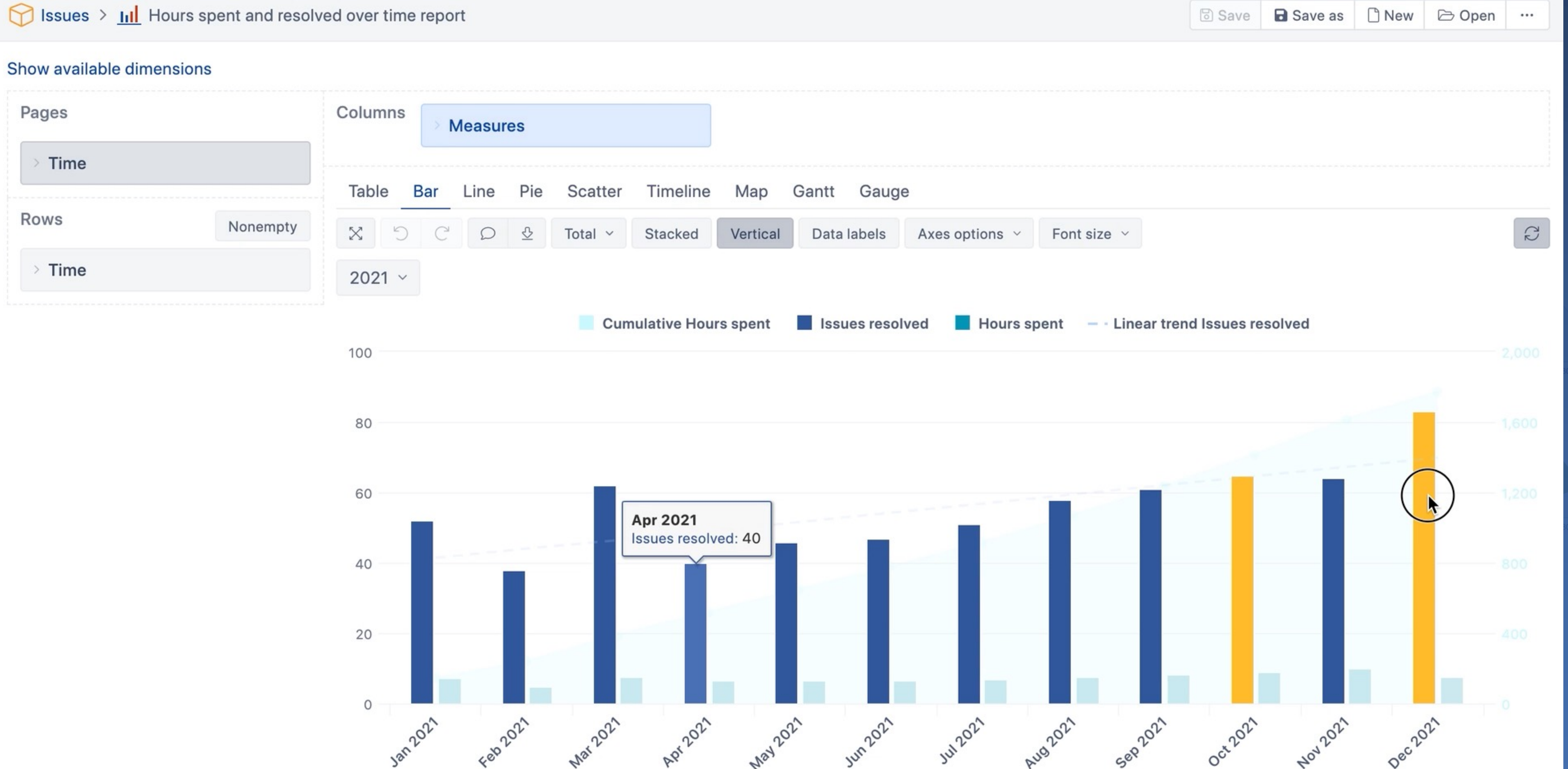
Drag at least one dimension to columns and one dimension to rows to query data.



2021 ▾



Explore your data



Data visualization with eazyBI

Visualisation

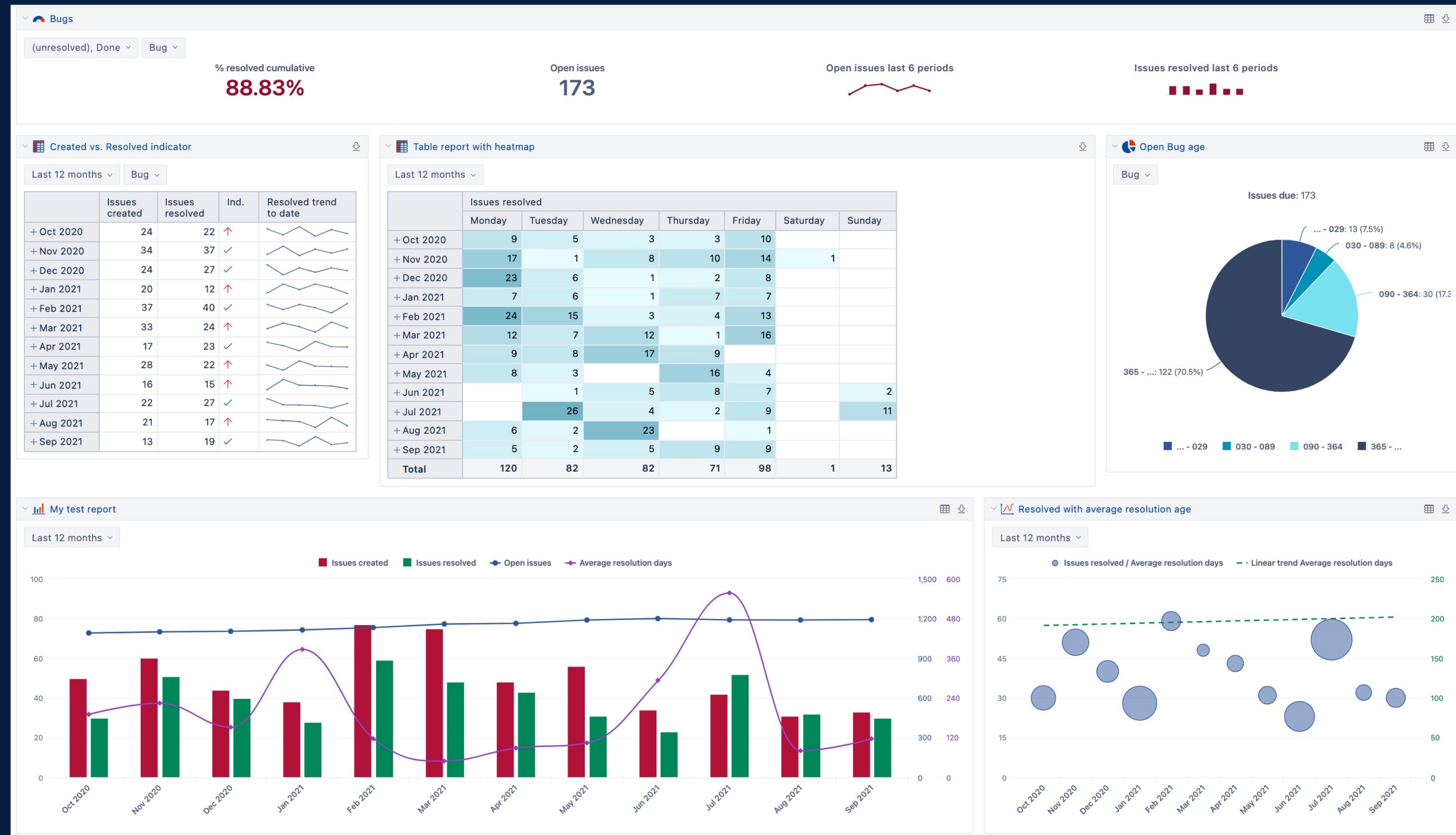
Table view

Bar-Line

Pie

Gauge

Gantt



Issue resolution

Visualisation

Table view

Bar-Line

Pie

Gauge

Gantt

Last 12 months ▾

	Issues resolved						
	Monday	Tuesday	Wednesday	Thursday	Friday	Saturday	Sunday
+ Oct 2020	9	5	3	3	10		
+ Nov 2020	17	1	8	10	14	1	
+ Dec 2020	23	6	1	2	8		
+ Jan 2021	7	6	1	7	7		
+ Feb 2021	24	15	3	4	13		
+ Mar 2021	12	7	12	1	16		
+ Apr 2021	9	8	17	9			
+ May 2021	8	3		16	4		
+ Jun 2021		1	5	8	7		2
+ Jul 2021		26	4	2	9		11
+ Aug 2021	6	2	23		1		
+ Sep 2021	5	2	5	9	9		
Total	120	82	82	71	98	1	13

Visualisation

Table view

Bar-Line

Pie

Gauge

Gantt

Issue resolution

Last 12 months ▾		Bug ▾	
	Issues created	Issues resolved	Ind.
+ Oct 2020	24	22	↑
+ Nov 2020	34	37	✓
+ Dec 2020	24	27	✓
+ Jan 2021	20	12	↑
+ Feb 2021	37	40	✓
+ Mar 2021	33	24	↑
+ Apr 2021	17	23	✓
+ May 2021	28	22	↑
+ Jun 2021	16	15	↑
+ Jul 2021	22	27	✓
+ Aug 2021	21	17	↑
+ Sep 2021	13	19	✓

Visualisation

Table view

Bar-Line

Pie

Gauge

Gantt

Issue resolution

Last 12 months ▾ Bug ▾

	Issues created	Issues resolved	Ind.	Resolved trend to date
+ Oct 2020	24	22	↑	
+ Nov 2020	34	37	✓	
+ Dec 2020	24	27	✓	
+ Jan 2021	20	12	↑	
+ Feb 2021	37	40	✓	
+ Mar 2021	33	24	↑	
+ Apr 2021	17	23	✓	
+ May 2021	28	22	↑	
+ Jun 2021	16	15	↑	
+ Jul 2021	22	27	✓	
+ Aug 2021	21	17	↑	
+ Sep 2021	13	19	✓	

Visualisation

Bar

Table view

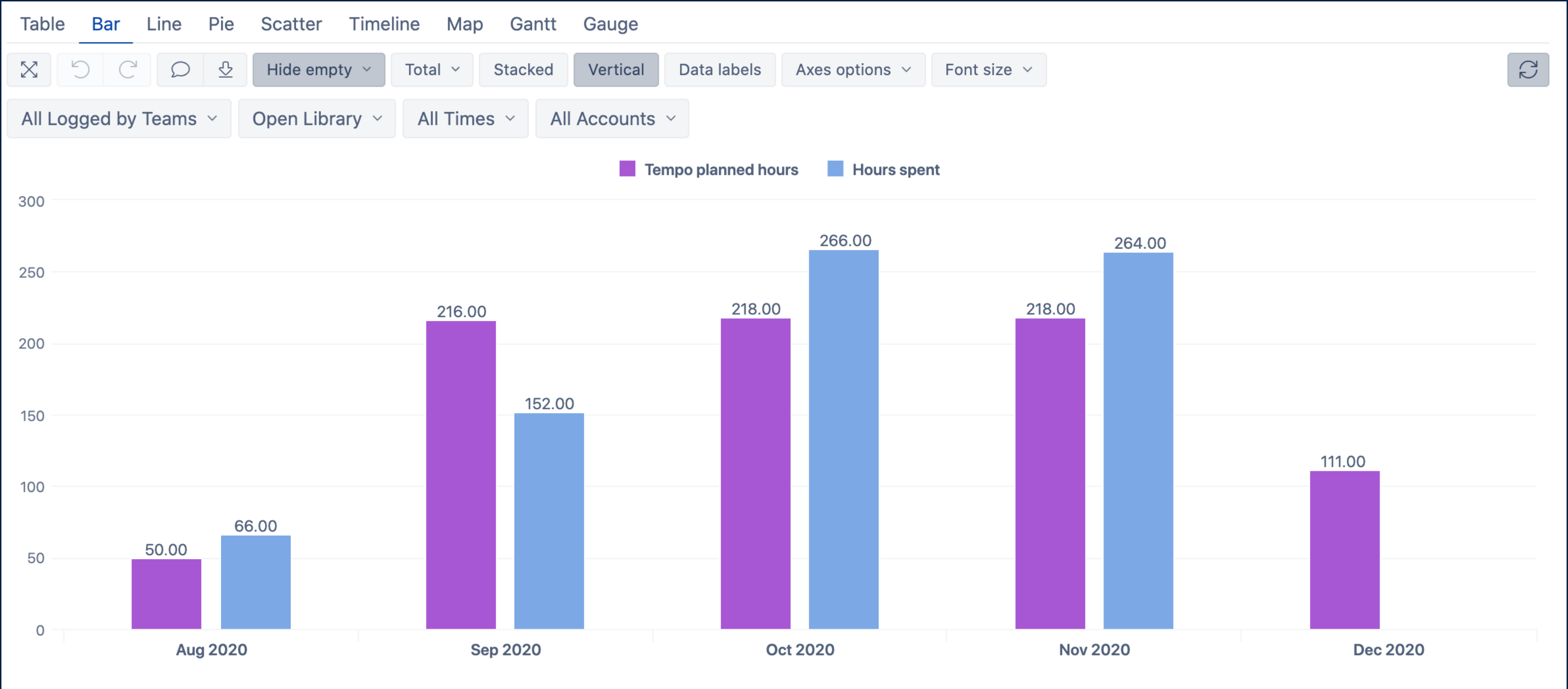
Bar-Line

Pie

Gauge

Gantt

Planned vs. actual



Visualisation



Table view

Bar-Line

Pie

Gauge

Gantt

Planned vs. actual



Visualisation

Planned vs. actual



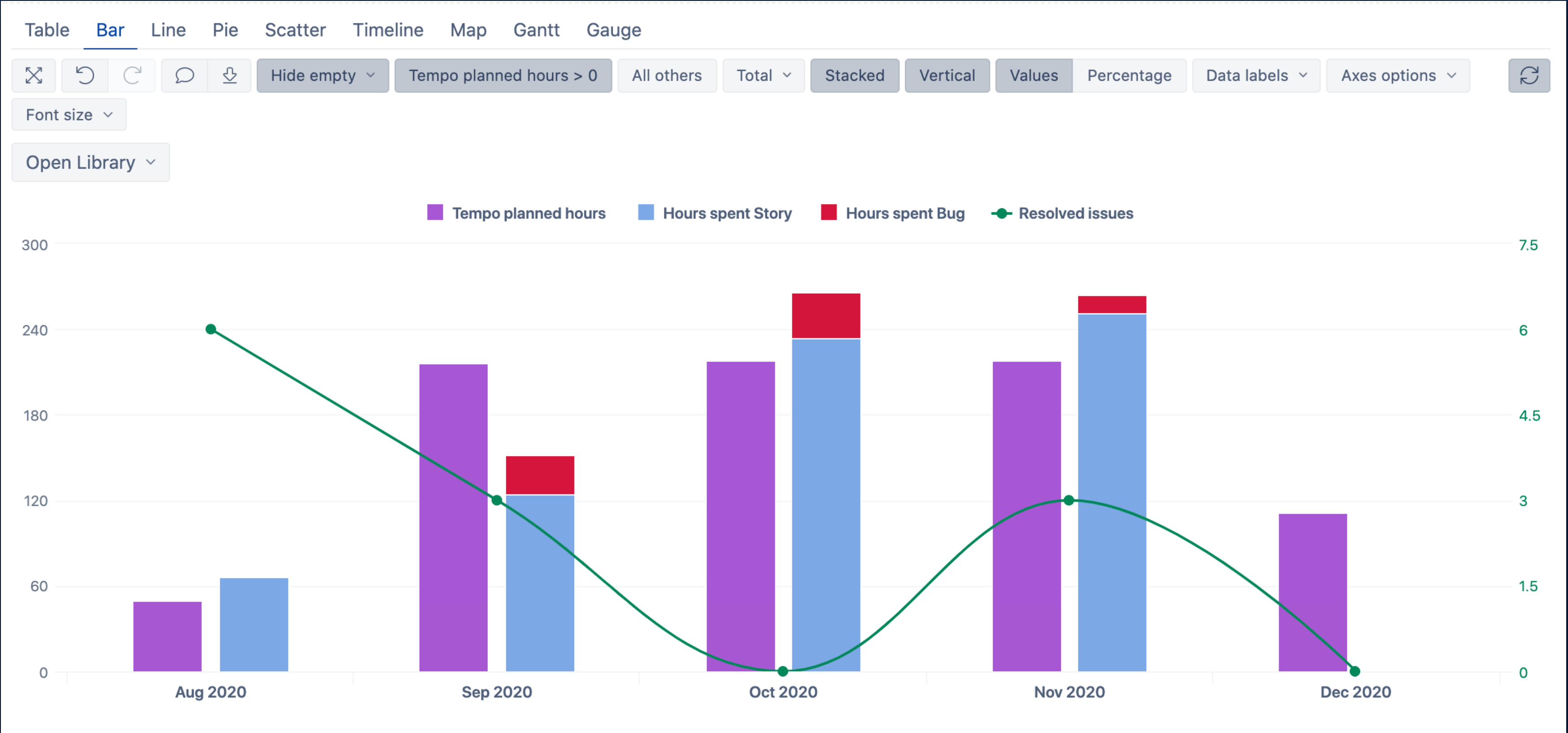
Table view

Bar-Line

Pie

Gauge

Gantt



Visualisation



Table view

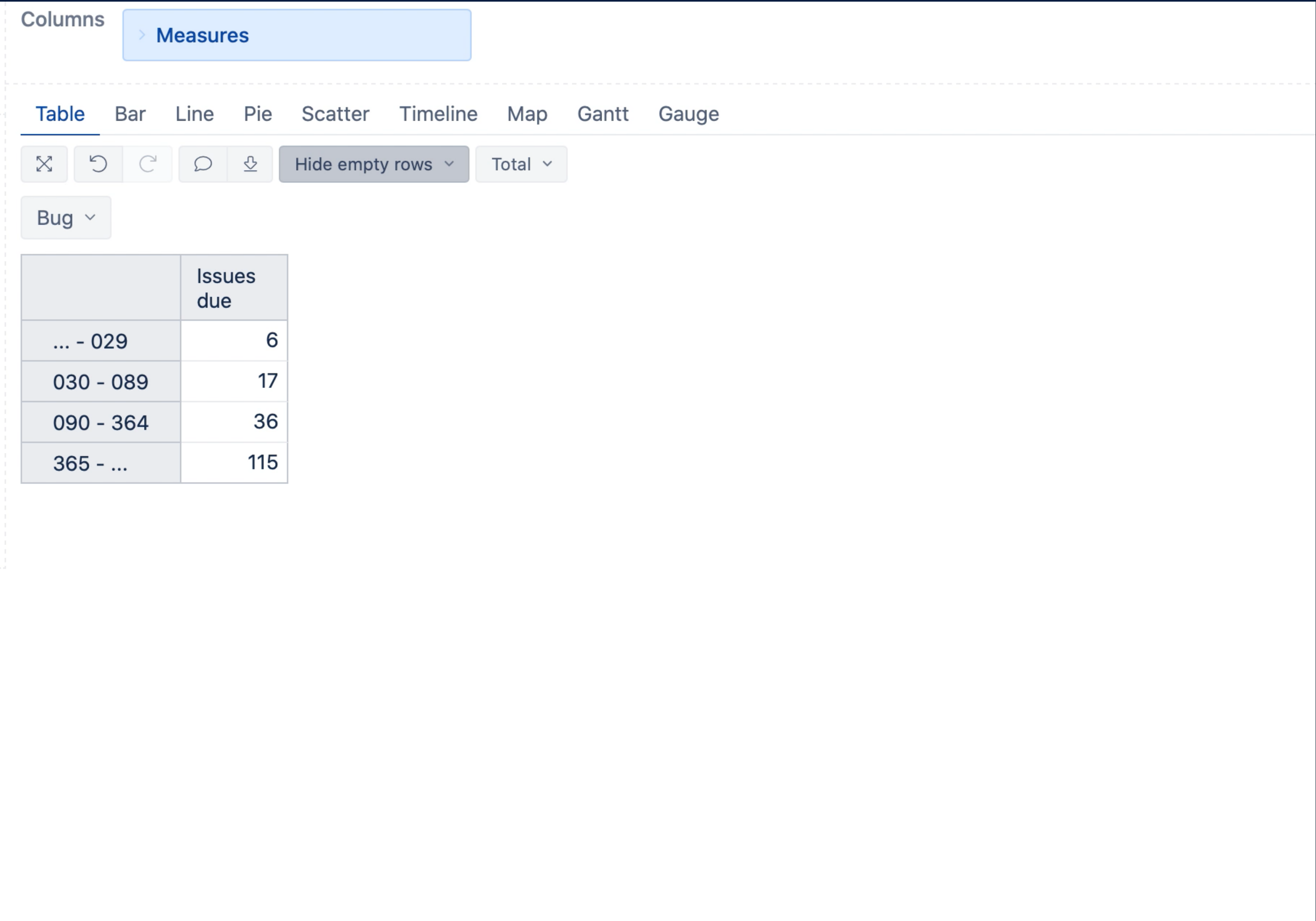
Bar-Line

Pie

Gauge

Gantt

Open issues, project overview



Visualisation

Table view

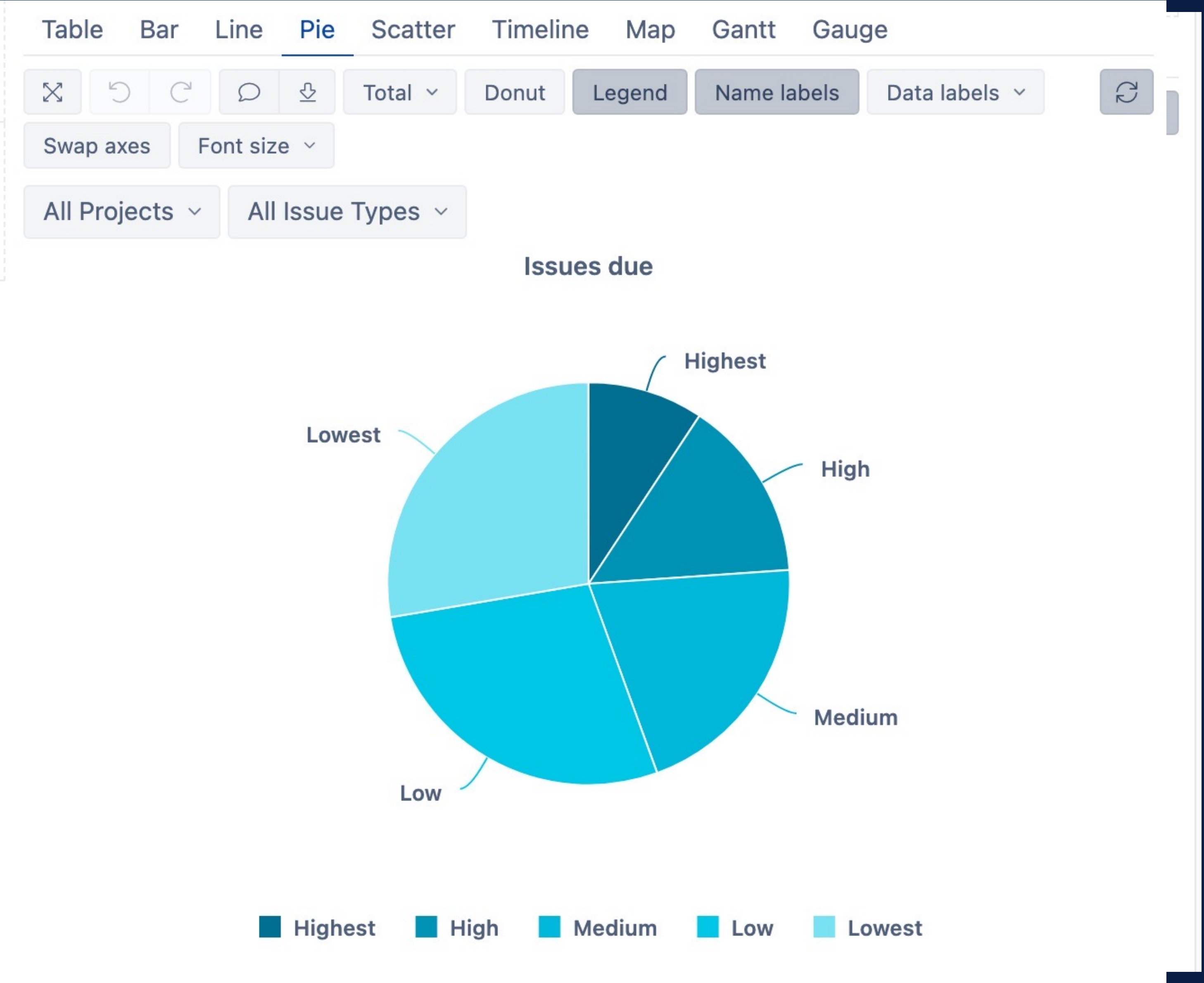
Bar-Line

Pie

Gauge

Gantt

Unresolved issues by priority



Visualisation

Open issues, project overview

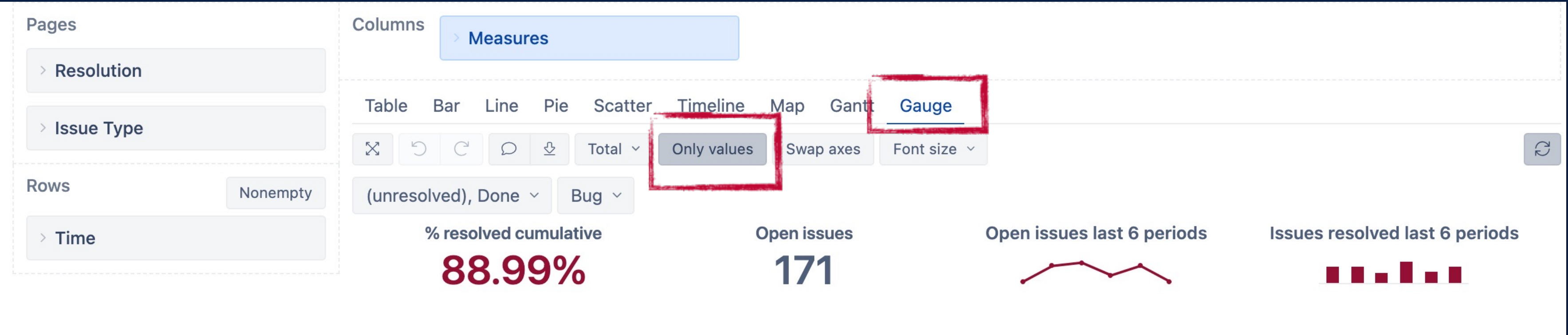
Table view

Bar-Line

Pie

Gauge

Gantt



Planning Gantt

Visualisation



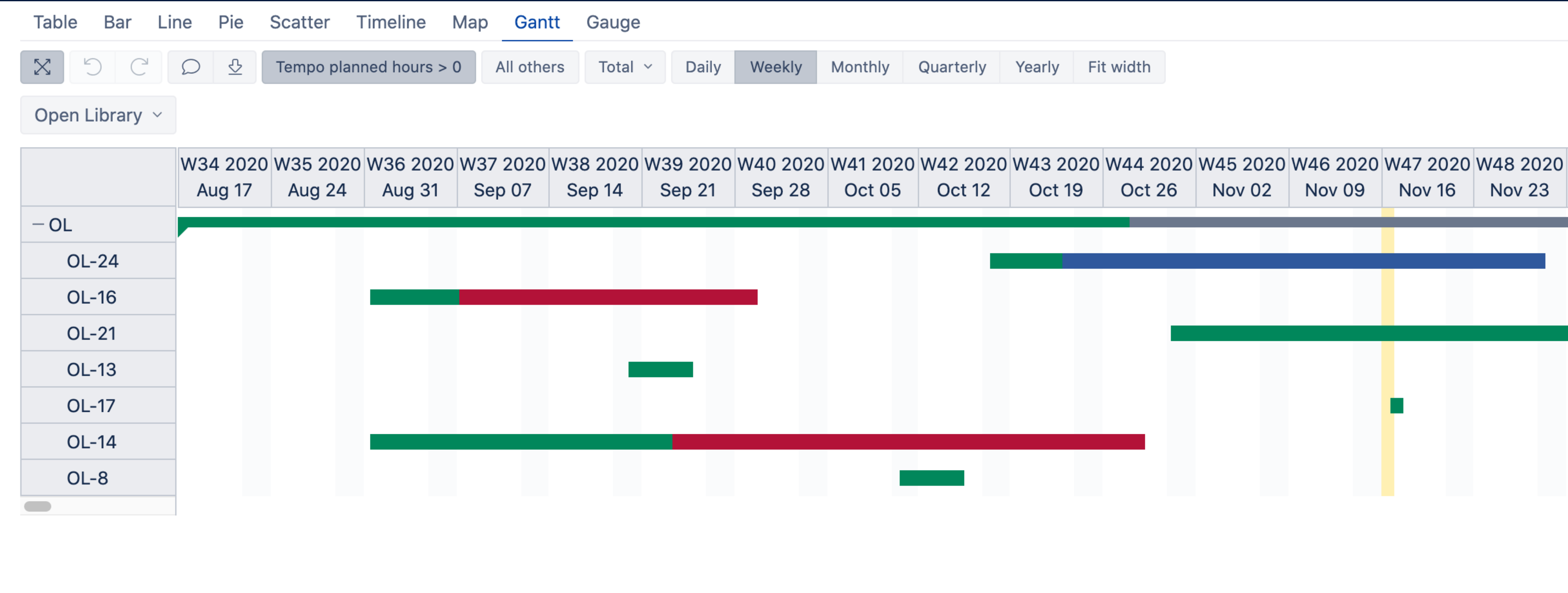
Table view

Bar-Line

Pie

Gauge

Gantt

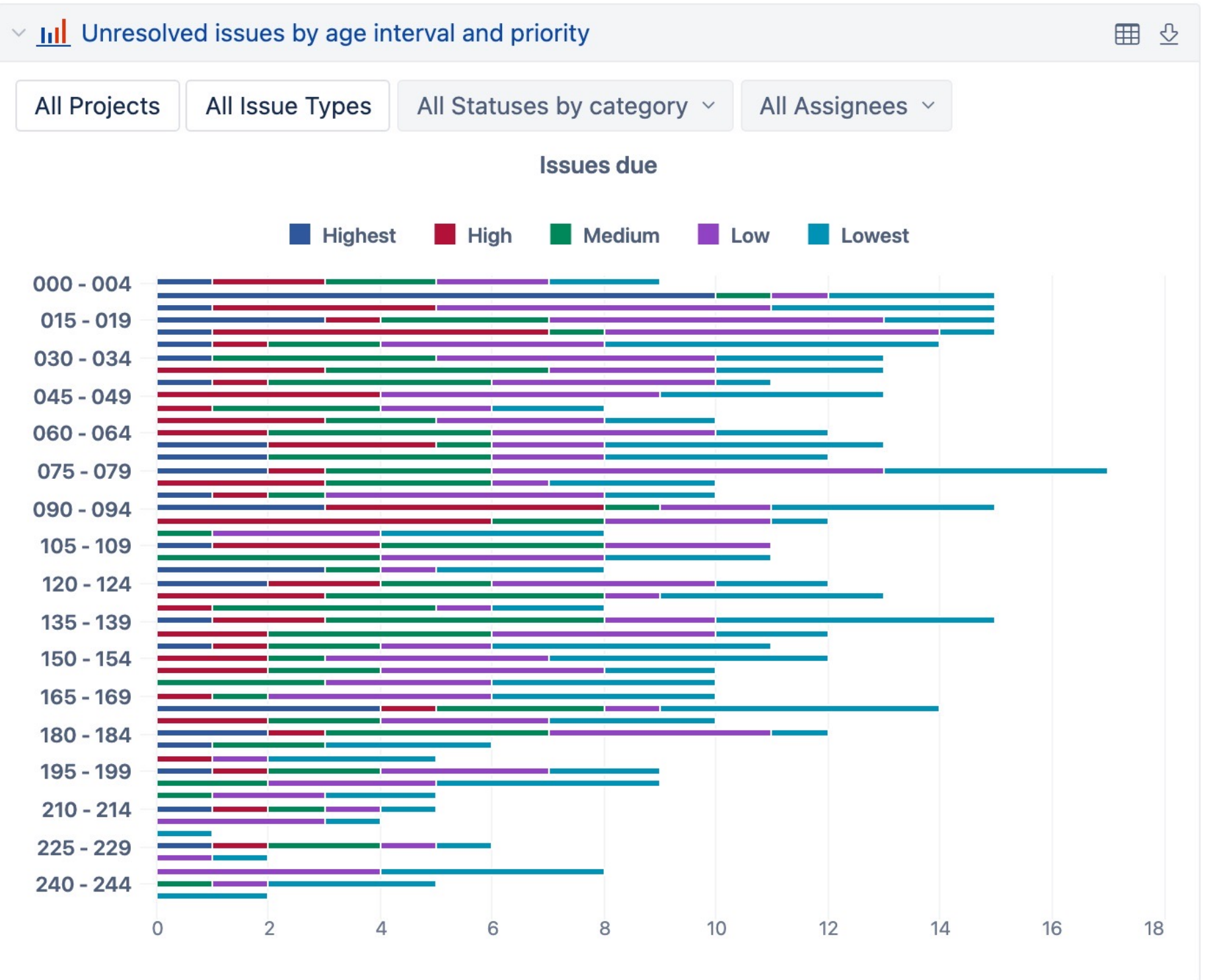
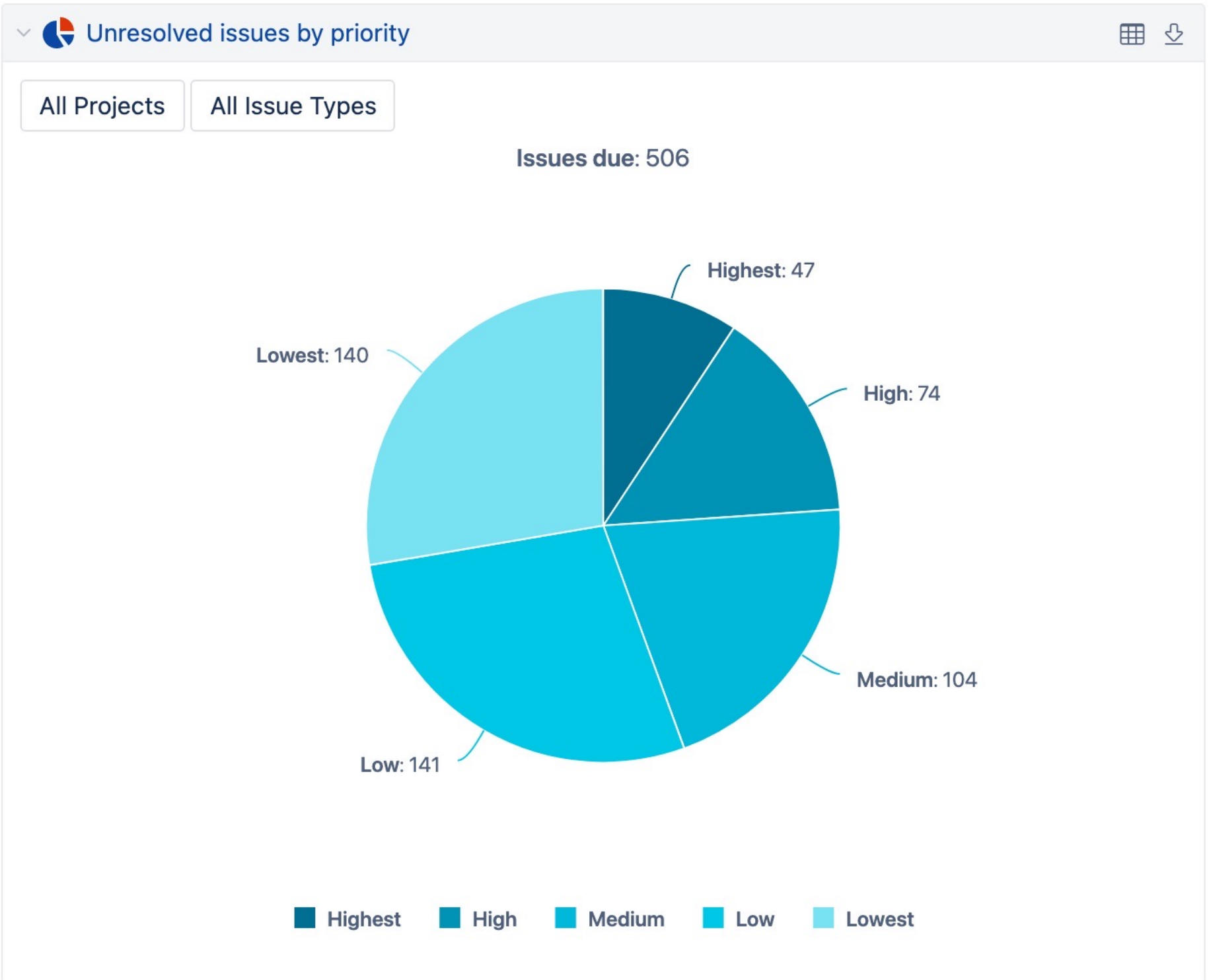
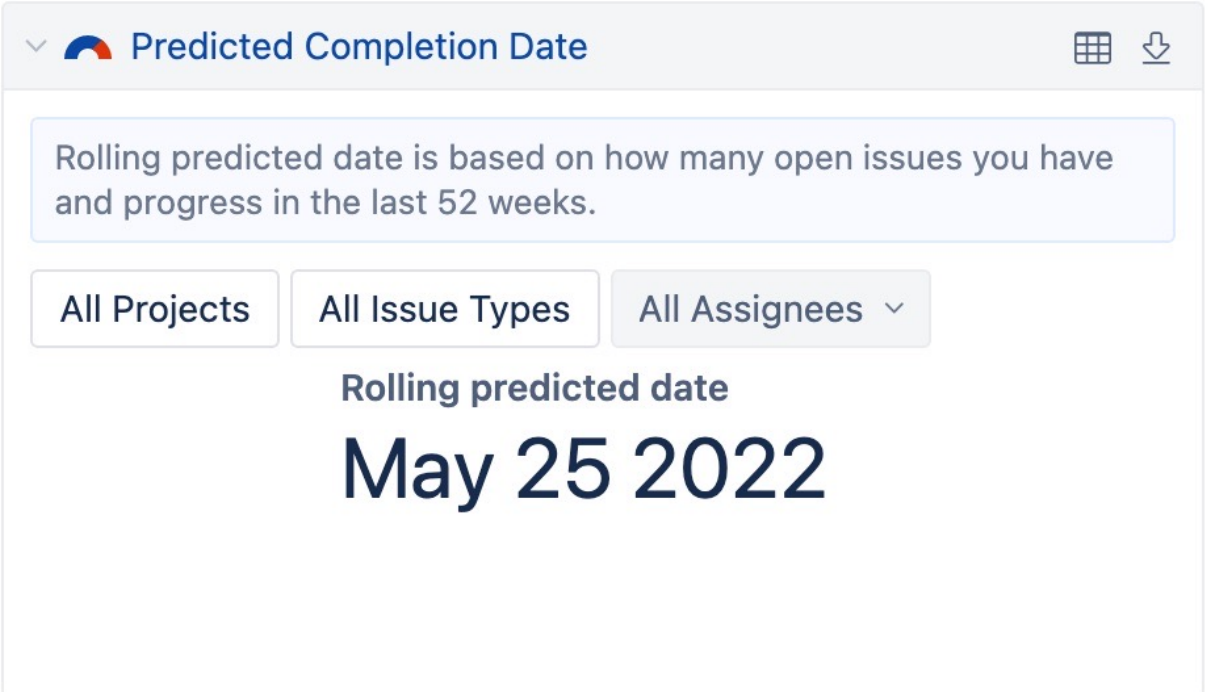
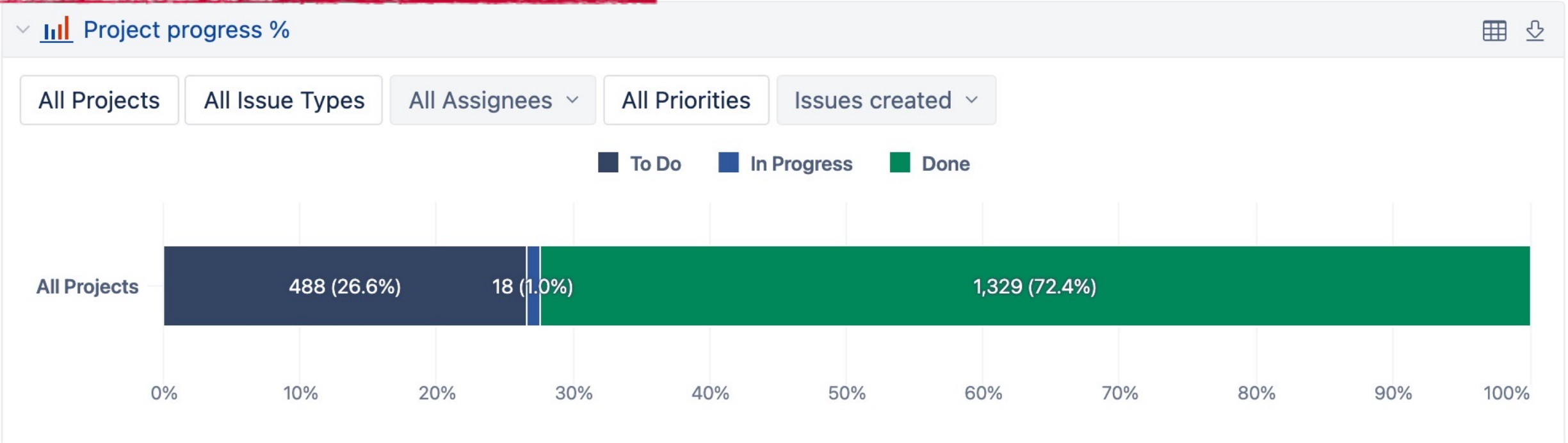


easyBI dashboard

All Priorities ▾

All Projects ▾

All Issue Types ▾



e-mail subscriptions

Dashboard email subscriptions

Time zone

(GMT+02:00) Helsinki

Dashboard	Mon	Tue	Wed	Thu	Fri	Sat	Sun	Days of a month	hours:min
Demo dashboard	<input checked="" type="checkbox"/>	<input type="checkbox"/>	<input type="checkbox"/>	<input type="checkbox"/>	<input checked="" type="checkbox"/>	<input type="checkbox"/>	<input type="checkbox"/>		09:00
template account dashboard test	<input type="checkbox"/>	<input type="checkbox"/>	<input type="checkbox"/>	<input type="checkbox"/>	<input type="checkbox"/>	<input type="checkbox"/>	<input type="checkbox"/>		

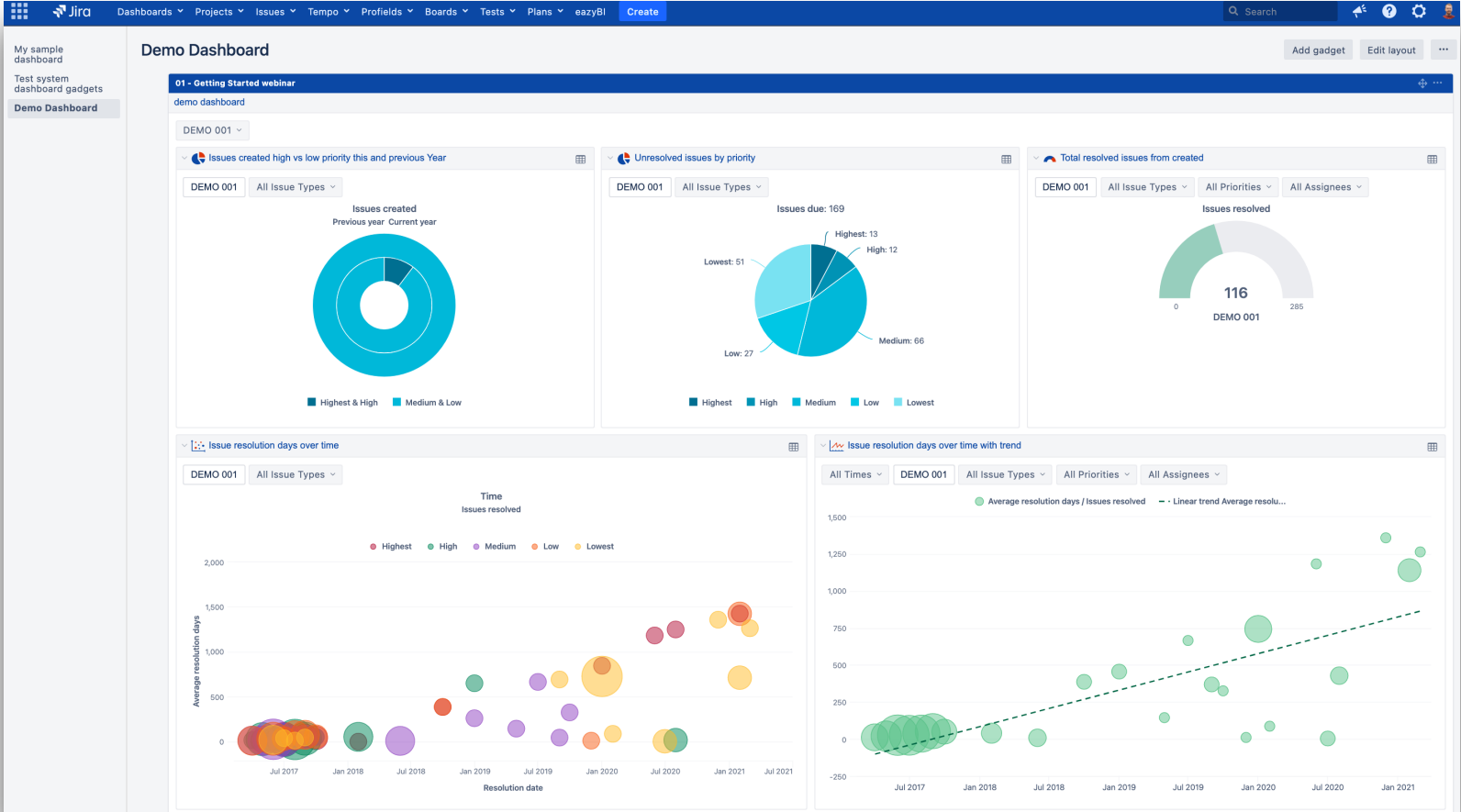
Selected dashboards will be exported to PDF and sent to your email as attachments. Please select days of a week or enter comma separated days of a month, and select the time when a dashboard should be sent. Set your time zone below the list of dashboards.

Send test email

Save subscriptions schedule

cancel

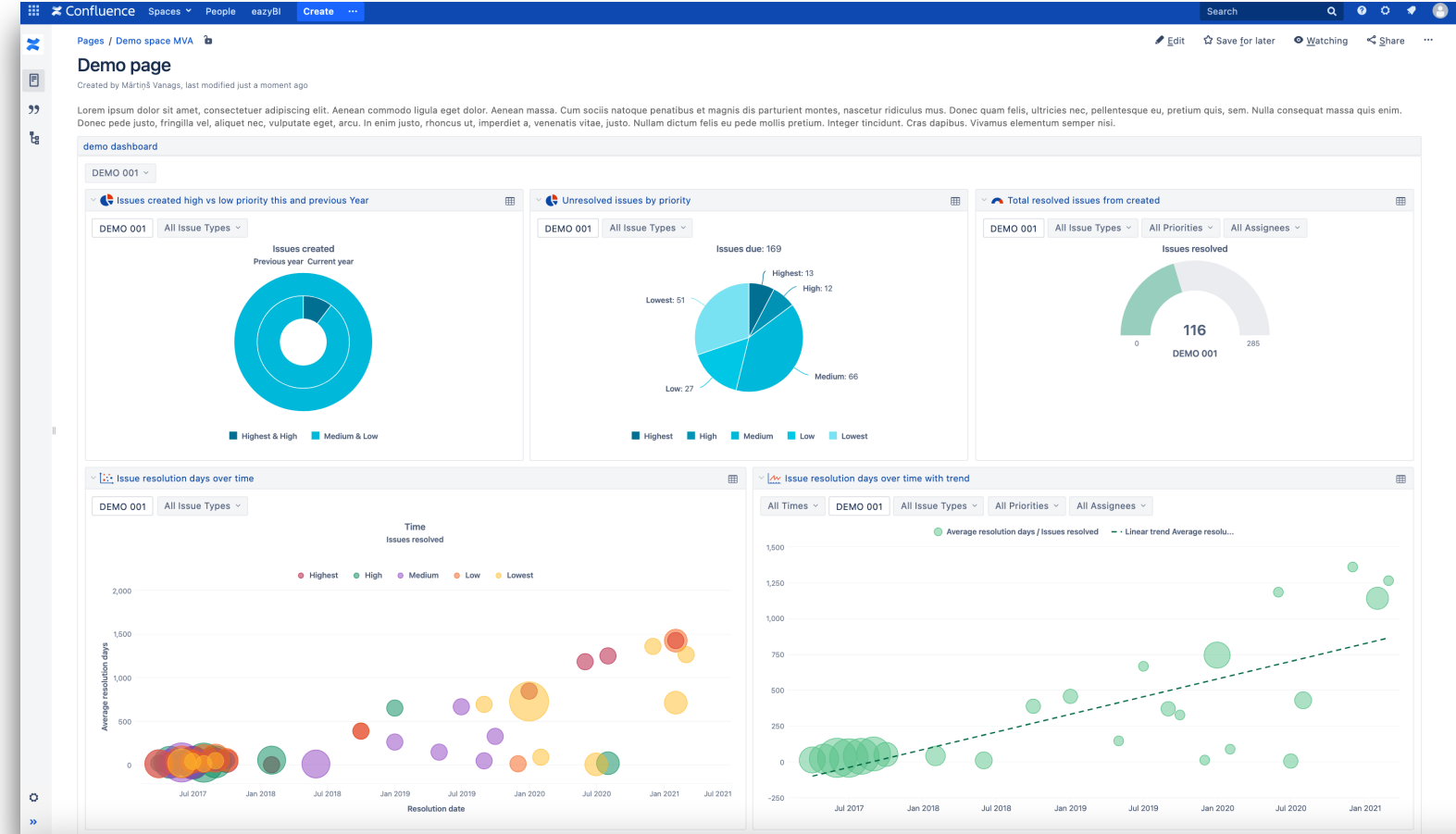
Jira dashboards



Wallboards



Confluence pages



**Simple things easy,
complex things possible**

Other Data Sources



Custom calculations

Define calculated member formula

[Measures].[issue change] =

1 [Measures].[Issues created]

2 -

3 [Measures].[

Issues created

Issues due

Issues resolved

Issues closed

Issues with due date

Issues last updated

Original estimated hours

Remaining estimated hours

Issues created count

Issues due count

Issues resolved count

Issues closed count

Hours spent

Issues with hours spent

Sub-tasks created

Formatting default

Read calculated member
select members, open
calculated member formula

Root members

Issues created

Issues due

Issues resolved

Issues closed

Issues with due date

Issues last updated

Original estimated hours

Remaining estimated hours

Issues created count

Issues due count

Issues resolved count

Issues closed count

Hours spent

Issues with hours spent

Create cancel

Issue links and precalculated custom fields

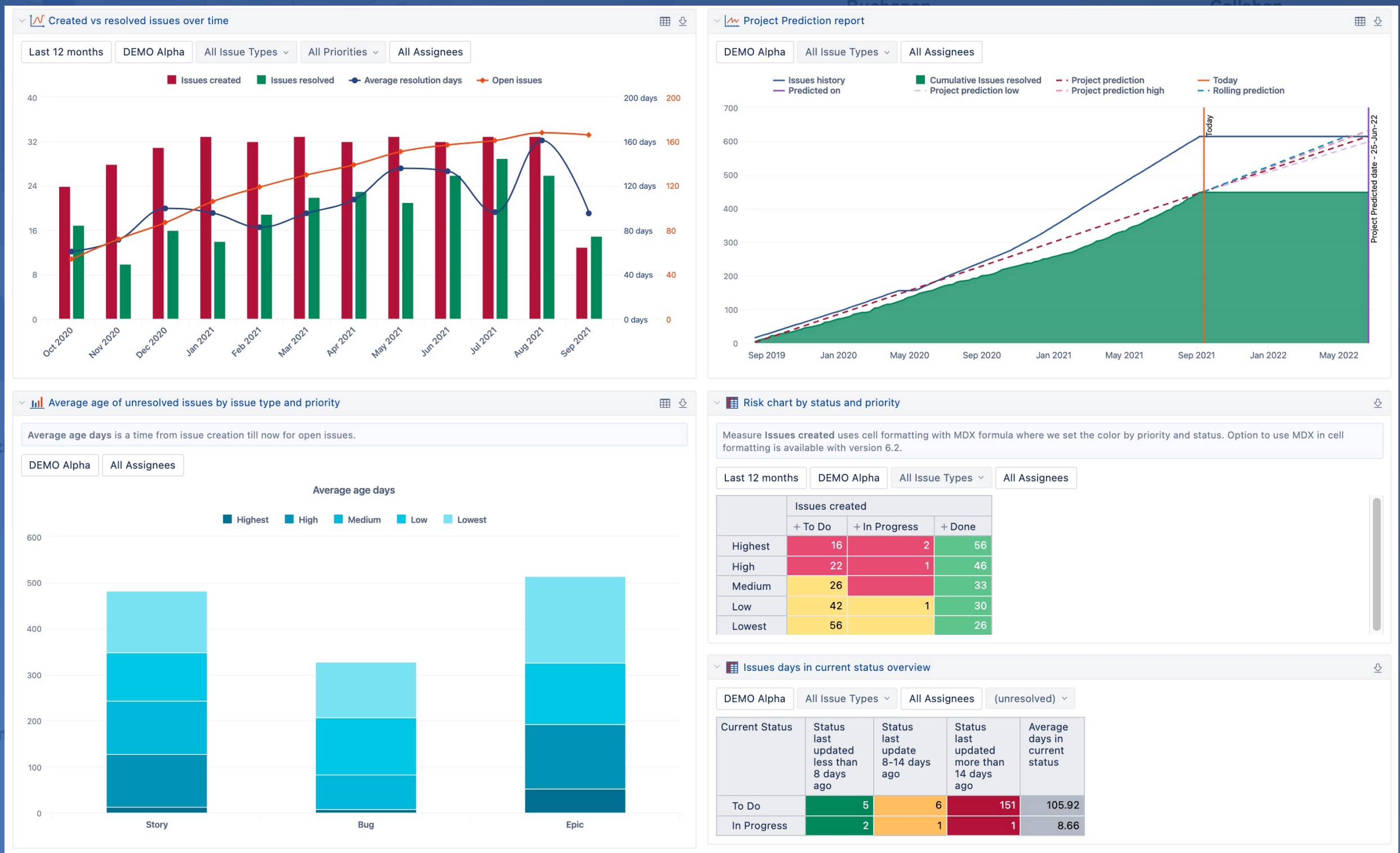
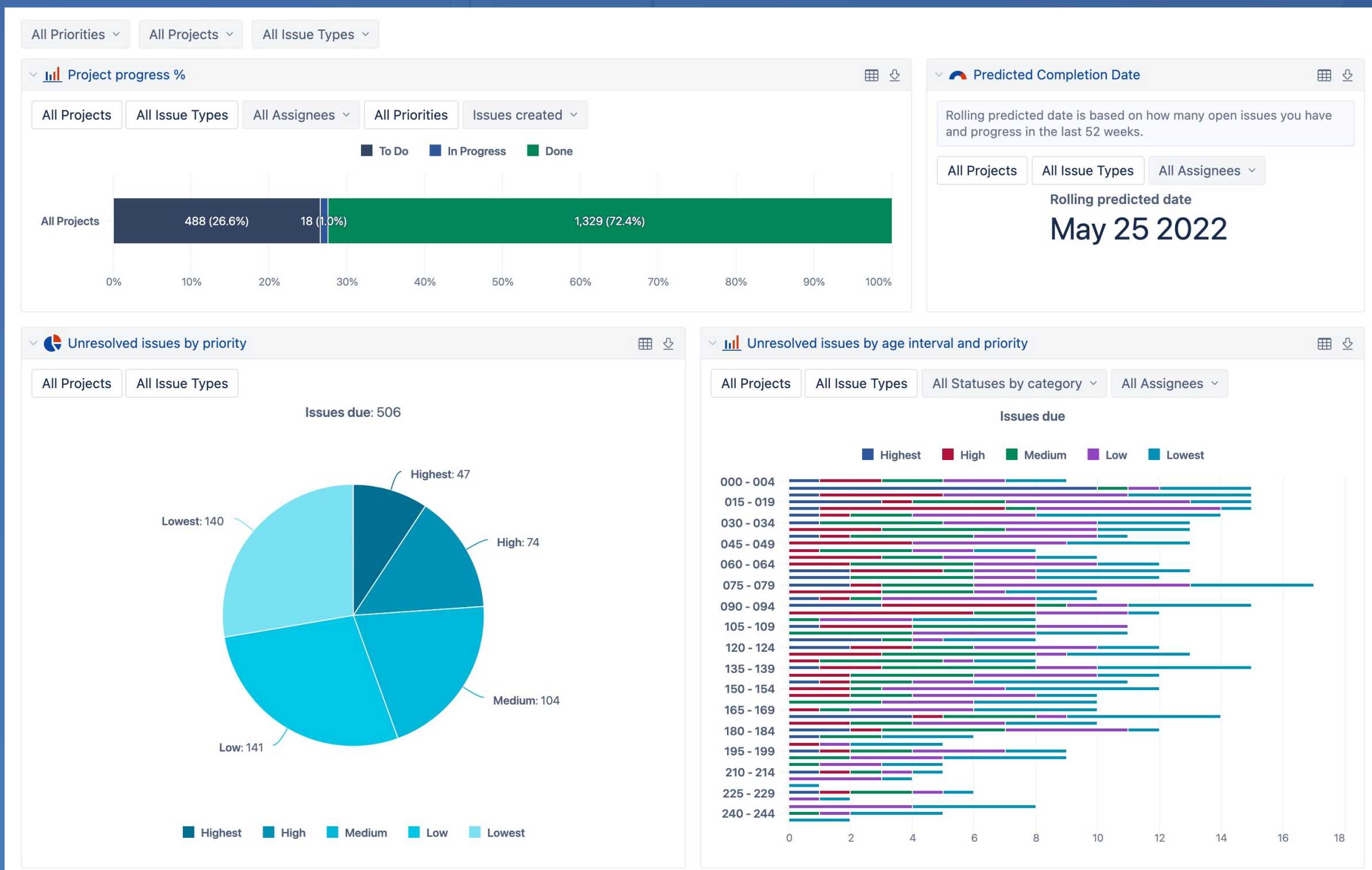
Advanced settings

Please see the [advanced settings documentation page](#).

```
10 #linked epics
11 [jira.customfield_epicsinmileston]
12 name = "Epics in Milestone"
13 inward_link = "is milestone of"
14 issue_type = "Epic"
15 dimension = true
16 multiple_values = true
17
18 #original estimaed hours with due date only
19 [jira.customfield_org_est_duedate]
20 name = "Original estimated hour by duedate"
21 data_type = "decimal"
22 measure = true
23 multiple_dates = true
24 javascript_code = '''
25 ortimeEstimateDueDate = new Array();
26 if ((!ortimeEstimateDueDate || !ortimeEstimateDueDate[0]) && issue.fields.timeoriginalestimat
27     ortimeEstimateDueDate.push((issue.fields.duedate) + ',' + parseInt(issue.fields.timeoriginal
28 }
29 if (ortimeEstimateDueDate) {
30     issue.fields.customfield_org_est_duedate = ortimeEstimateDueDate.join("\n");
31 }
32 '''
33
```


easyBI Demo account

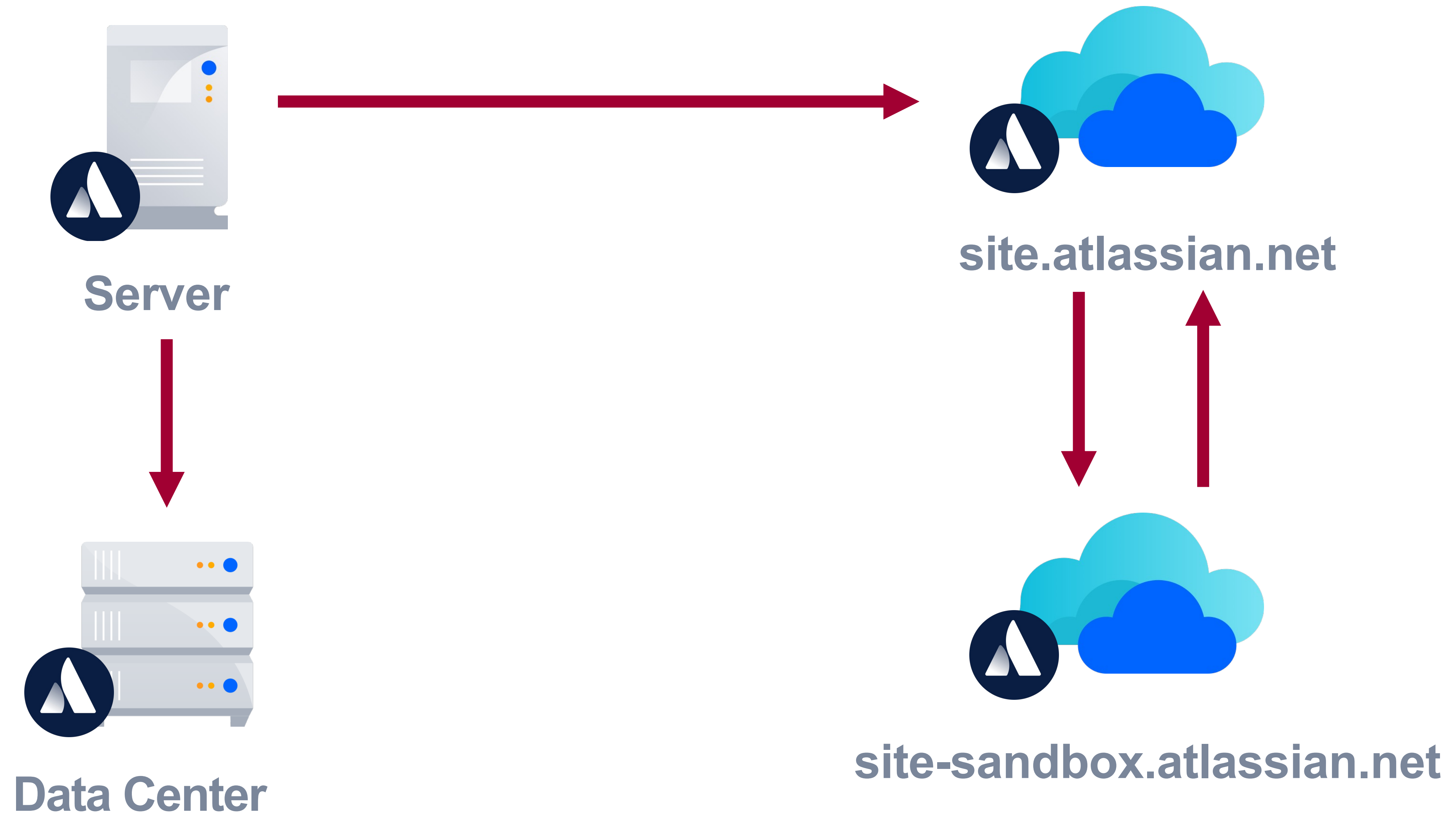
Don't re-invent the wheel



eazyBI: where you are



All deployments, any migrations supported



Summary



Simple and attractive

Visualise and explore data



Powerful

Simple things easy, complex things possible



Cloud first

Server & Data Center follow



Questions?

community.eazybi.com
support@eazybi.com